

# 115 HOMELESS HOUSEHOLDS

The Logan Zero campaign is an initiative to end homelessness and rough sleeping in the Logan region through a coordinated, collaborative and person-centred approach. 115 households on the Logan By Name List completed a VI-SPDAT\* survey between December 2021 and September 2022. This provides an initial insight into the housing and support needs of the region that will be built on over time.

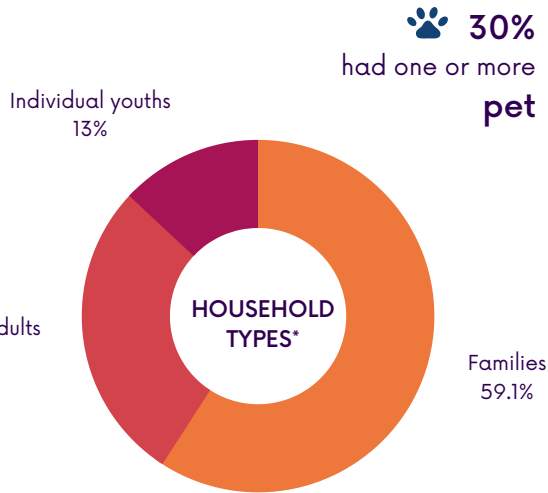
## HOUSEHOLDS

(n) 115 people between the ages of 17 - 80 were surveyed as the main presenting person per household. Most respondents were young families with children:

297 people\* across 115 households including: **164 children**

**Average age** of main presenting person per household was **36 years old**

**69%** of main presenting person per household identified as **female**



## HOMELESS HISTORY

Many households experienced hidden and chronic homelessness:

Top three places slept most frequently include:



1. Couch surfing
2. Cars
3. Emergency accomodation

**43%** slept rough at time of survey

**Average time** homeless was **1 Year and 7 Months**

**Longest time** a person experienced homelessness was **25 Years**



**At least 33%** first experienced homelessness as a child\* (at or under 18 years old)

Participants voiced that to be safe and well, they wanted to be: **"Getting on top of things, stability for kids, stable job, stable housing, situation is not temporary"**

## RISKS

Most households require a high level of support to sustain housing:

### LEVEL OF SUPPORT REQUIRED

Low support Medium support High support



**Relationship breakdown** was a cause of homelessness for 63% of households

**78%** experienced trauma

**59%** experienced physical harm or verbal abuse



**30%** were at risk of harm from a spouse, parent, relative or friend

Average times crisis services used was **7 times** in the last 6 months

**50%** felt discriminated against when seeking supports

## HEALTH OVERVIEW

Most households have a chronic or mental health condition:

### HEALTH OVERVIEW

At least one chronic health condition (CH) **85%**

At least one mental health condition (MH) **87%**

Substance use (SU)\* **43%**

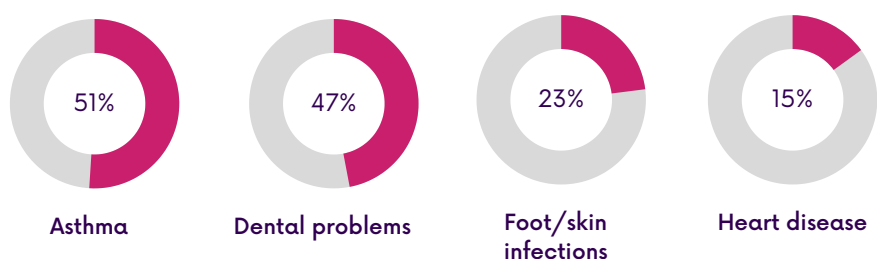
Has a physical disability limiting housing **20%**

Avoids seeking healthcare when unwell **42%**

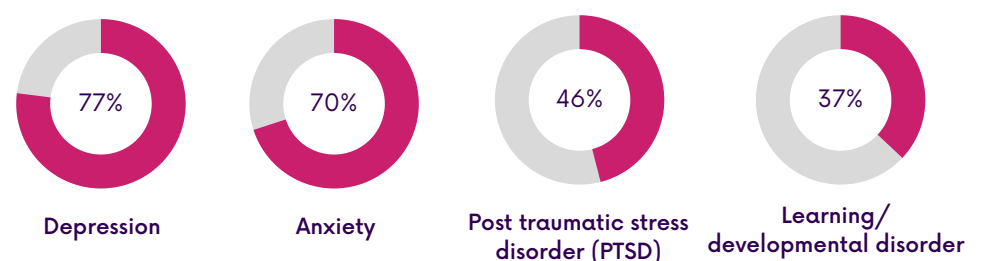


## TOPLINE HEALTH

### PHYSICAL HEALTH CONDITIONS



### MENTAL HEALTH CONDITIONS



**\*NOTES:**

1. This data is representative of 115 households where main presenting person per household completed a Vulnerability Index - Service Prioritisation Decision Assistance Tool (VI-SPDAT) survey between December 2021 to September 2022.
2. VI-SPDAT surveys provide an acuity score to indicate the level of support required to sustain housing as low (score 0-4), medium (score 5-9) and high (score 10+).
3. Household types: Individual adults (>= 26 years old), Individual youths (16-25 years old), Families are multiple groups of people presenting together regardless if they have dependents.
4. Total number of people include main presenting person (head of household), second head of household, and children that were with and not with families at time of survey.
5. Figure for 'First experienced homelessness as a child' may be under represented due to non responses to the question by 27 people.
6. Figure for 'Substance use' is based on answering 'Yes' to at least one alcohol and/or drug use question to indicate substance usage.

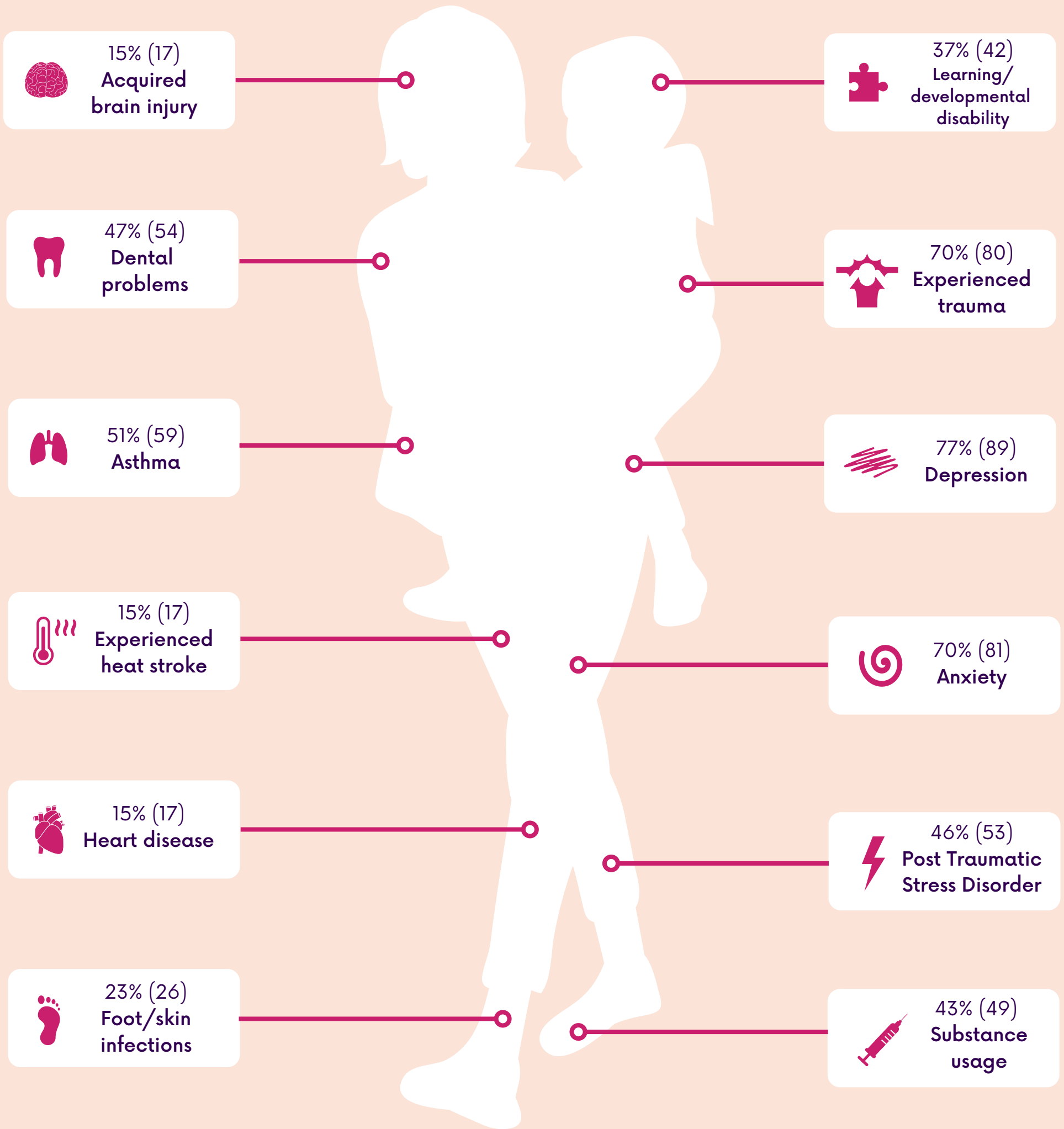


# 115 HOMELESS HOUSEHOLDS: SPOTLIGHT ON HEALTH

AT HIGH RISK OF DEATH\*  
BASED ON HIGH ACUITY RATING

79%

115 households had the following health conditions:



**\*NOTES:**

1. This data is representative of 115 households where main presenting person per household completed a Vulnerability Index - Service Prioritisation Decision Assistance Tool (VI-SPDAT) survey between December 2021 to September 2022.
2. VI-SPDAT surveys provide an acuity score to indicate the level of support required to sustain housing as low (score 0-4), medium (score 5-9) and high (score 10+).
3. Household types: Individual adults (>= 26 years old), Individual youths (16-25 years old), Families are multiple groups of people presenting together regardless if they have dependents.
4. Total number of people include main presenting person (head of household), second head of household, and children that were with and not with families at time of survey.
5. Figure for 'High risk of death' is based on people who scored highly on the VI-SPDAT acuity scoring. People experiencing homelessness have been shown to be at increased risk of mortality. <https://www.aihw.gov.au/reports/australias-health/health-of-people-experiencing-homelessness>
6. Figure for 'Substance use' is based on answering 'Yes' to at least one alcohol and or drug use question to indicate substance usage.