

# 150 HOMELESS HOUSEHOLDS

The Logan Zero campaign is an initiative to end homelessness and rough sleeping in the Logan Local Government Area through a coordinated, collaborative and person-centred approach.

Since the establishment of a Logan By Name List in December 2021 and up until January 2023, 464 households have been added to the list. 150 of those households consented and completed a Vulnerability Index Service Prioritisation Decision Assistance Tool (VI-SPDAT) survey. The real time data provides insight into the housing and support needs within the Local Government Area.

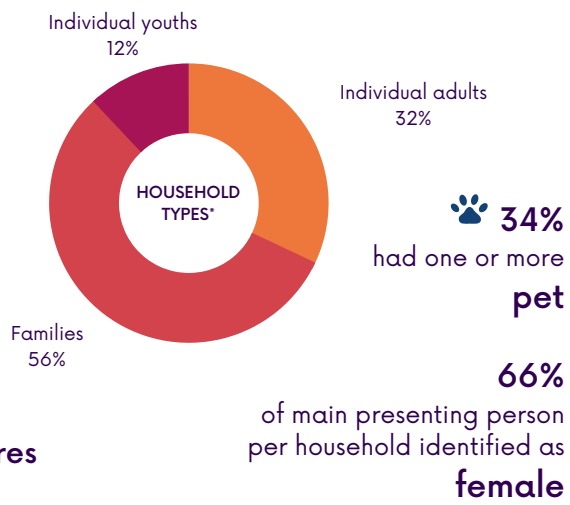
## HOUSEHOLDS

(n) 150 people between the ages of 16 - 80 were surveyed as the main presenting person per household. Most respondents were young families with children:

360 people\* across 150 households including: **208 children**

**Average age** of main presenting person per household was **37 years old**

**18%** of main presenting persons identified as **Aboriginal and/or Torres Strait Islander peoples**



## HOMELESS HISTORY

Many households experienced hidden and chronic homelessness:

Top three places slept most frequently include:



1. Couch surfing
2. Cars
3. Emergency accommodation

**49%** were sleeping rough at time of survey

**Average time** homeless was **1 Year and 6 Months**

**Longest time** a household experienced chronic homelessness was **33 Years**



**At least 35%** first experienced homelessness as a child\* (at or under 18 years old)

**79%** of households on the By Name List do not have case managers to assist with navigating the homelessness and housing system, this would improve if Logan had a homelessness outreach support service.

## VULNERABILITIES

Most households require a high level of support to sustain housing:

### LEVEL OF SUPPORT REQUIRED

Low support Medium support High support



**Relationship breakdown** was a cause of homelessness for more than half of households

**67%** experienced trauma

**59%** experienced physical harm or verbal abuse



**3 in 10** were at risk of harm from a spouse, parent, relative or friend

Most times a crisis service was used was **165 times** in the last 6 months

**53%** felt discriminated against when seeking supports

## HEALTH OVERVIEW

Most households have a physical or mental health condition:

### HEALTH OVERVIEW

At least one physical health condition (CH) **81%**

At least one mental health condition (MH) **87%**

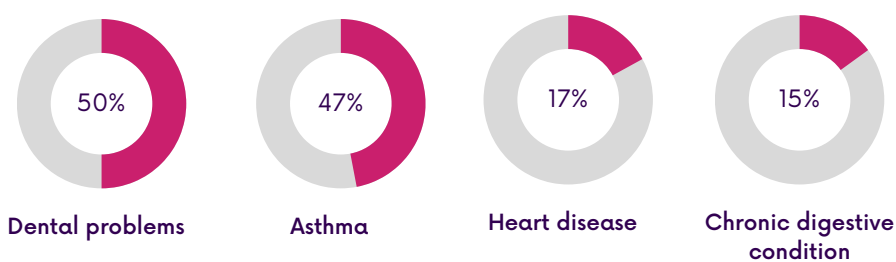
Substance use (SU)\* **49%**

Has a physical disability limiting housing **19%**

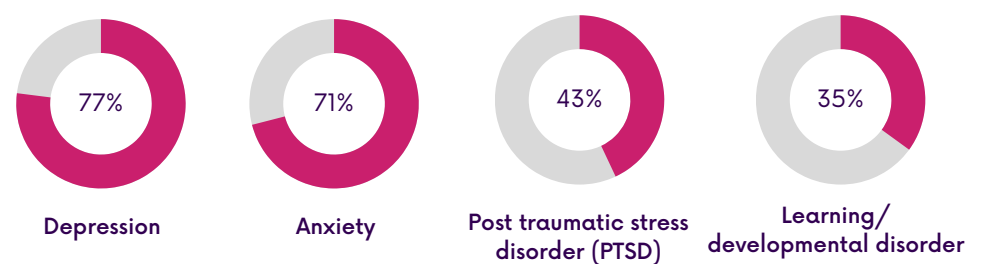
Avoids seeking healthcare when unwell **43%**

## TOPLINE HEALTH

### PHYSICAL HEALTH CONDITIONS



### MENTAL HEALTH CONDITIONS



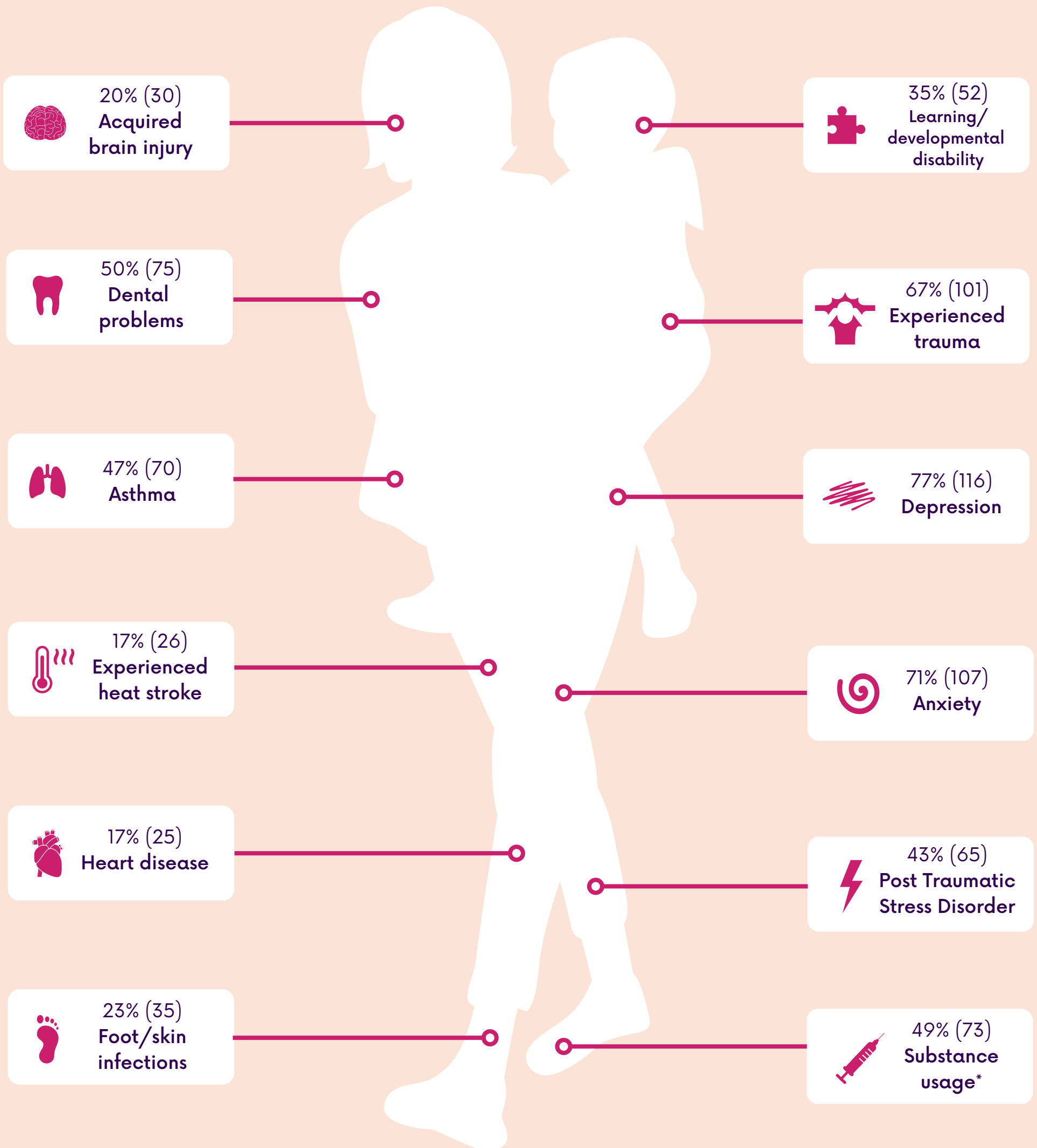
#### \*NOTES:

1. This data is representative of 150 households where main presenting person per household completed a Vulnerability Index - Service Prioritisation Decision Assistance Tool (VI-SPDAT) survey between December 2021 to January 2023.
2. VI-SPDAT surveys provide an acuity score to indicate the level of support required to sustain housing as low (score 0-4), medium (score 5-9) and high (score 10+).
3. Household types: Individual adults (>= 26 years old), Individual youths (16-25 years old), Families are multiple groups of people presenting together regardless if they have dependents.
4. Total number of people include main presenting person (head of household), second head of household, and children that were with and not with families at time of survey.
5. Figure for 'First experienced homelessness as a child' may be under represented due to non responses to the question by 27 people.
6. Figure for 'Substance use' is based on answering 'Yes' to at least one alcohol and/or drug use question to indicate substance usage.

# SPOTLIGHT ON HEALTH

150 households had the following health conditions:

**8 IN 10** AT HIGH RISK OF DEATH\*



**\*NOTES:**

1. This data is representative of 150 households where main presenting person per household completed a Vulnerability Index - Service Prioritisation Decision Assistance Tool (VI-SPDAT) survey between December 2021 to January 2023.
2. VI-SPDAT surveys provide an acuity score to indicate the level of support required to sustain housing as low (score 0-4), medium (score 5-9) and high (score 10+).
3. Household types: Individual adults (>= 26 years old), Individual youths (16-25 years old), Families are multiple groups of people presenting together regardless if they have dependents.
4. Total number of people include main presenting person (head of household), second head of household, and children that were with and not with families at time of survey.
5. Figure for 'High risk of death' is based on people who scored highly on the VI-SPDAT acuity scoring. People experiencing homelessness have been shown to be at increased risk of mortality. <https://www.aihw.gov.au/reports/australias-health/health-of-people-experiencing-homelessness>
6. Figure for 'Substance use' is based on answering 'Yes' to at least one alcohol and or drug use question to indicate substance usage.