

290 HOMELESS HOUSEHOLDS

The Logan Zero campaign is an initiative to end homelessness and rough sleeping in the Logan Local Government Area through a coordinated, collaborative and person-centred approach.

Between December 2021 and up until January 2024, 935 households have been added to the Logan By Name List by 11 support and community organisations in Logan. Of those, 290 households consented and completed a Vulnerability Index Service Prioritisation Decision Assistance Tool (VI-SPDAT) survey.

The real time data provides insight into the housing and support needs within Logan.

HOUSEHOLDS

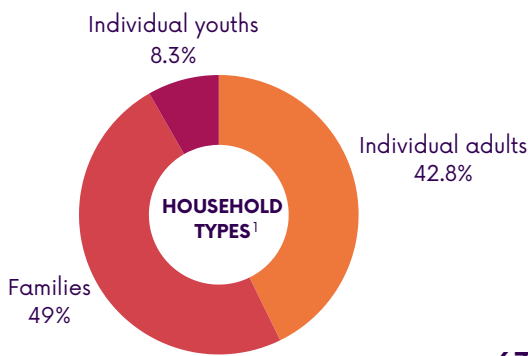
(n) 290 people between the ages of 16-81 were surveyed as the main presenting person per household.¹ Most respondents were families however closely followed by individuals:

741 people² within 290 households, including:

344 children

Average age of main presenting person per household was **47 years old**

20% of main presenting persons identified as **Aboriginal and/or Torres Strait Islander peoples**



63% of main presenting person per household identified as **female**

HOMELESS HISTORY

Many households moved between rough sleeping and temporary accommodation:

Top three places slept most frequently include:



1. Couch surfing
2. Cars
3. Crisis accommodation

32% had one or more pet

Average time homeless was **2 years**

Longest time a household experienced chronic homelessness was **33 Years**



At least 53% first experienced homelessness as a child³ (at or under 18 years old)

77% of households were highly vulnerable indicating long term or permanent supports required to assist them to sustain housing.

VULNERABILITIES

Most households require a high level of support to sustain housing:

LEVEL OF SUPPORT REQUIRED BASED ON VI-SPDAT SCORE⁴

Low support Medium support High support



WHAT PEOPLE NEED TO FEEL SAFE AND WELL



SERVICE USAGE

Average crisis service usage was **9 times** in 6 months

Average presentation to emergency ward was **3 times** in 6 months

6 in 10 were at risk of harm from a spouse, parent, relative or friend

46% felt discriminated against when seeking supports

HEALTH OVERVIEW

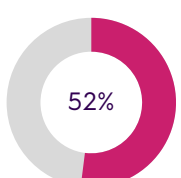
Most households have a physical or mental health condition:

HEALTH OVERVIEW

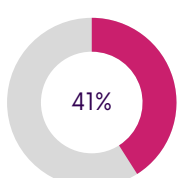


TOPLINE HEALTH

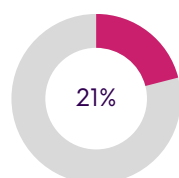
PHYSICAL HEALTH CONDITIONS



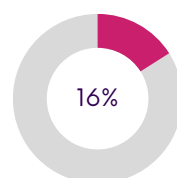
Dental problems



Asthma

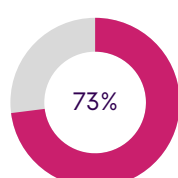


Serious brain/head trauma

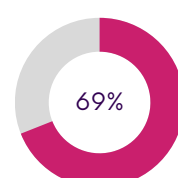


Heart disease

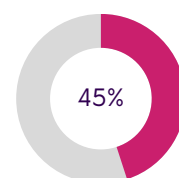
MENTAL HEALTH CONDITIONS



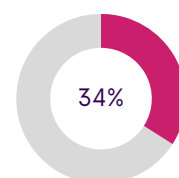
Depression



Anxiety



Post traumatic stress disorder (PTSD)



Learning/developmental disorder

NOTES:

This data is representative of 290 households where main presenting person per household completed a Vulnerability Index - Service Prioritisation Decision Assistance Tool (VI-SPDAT) survey between December 2021 to January 2024.

1. Household types: Individual adults (>= 26 years old), Individual youths (16-25 years old), Families are multiple groups of people presenting together regardless if they have dependents.

2. Total number of people include main presenting person (head of household), second head of household, and children that were with and not with families at time of survey.

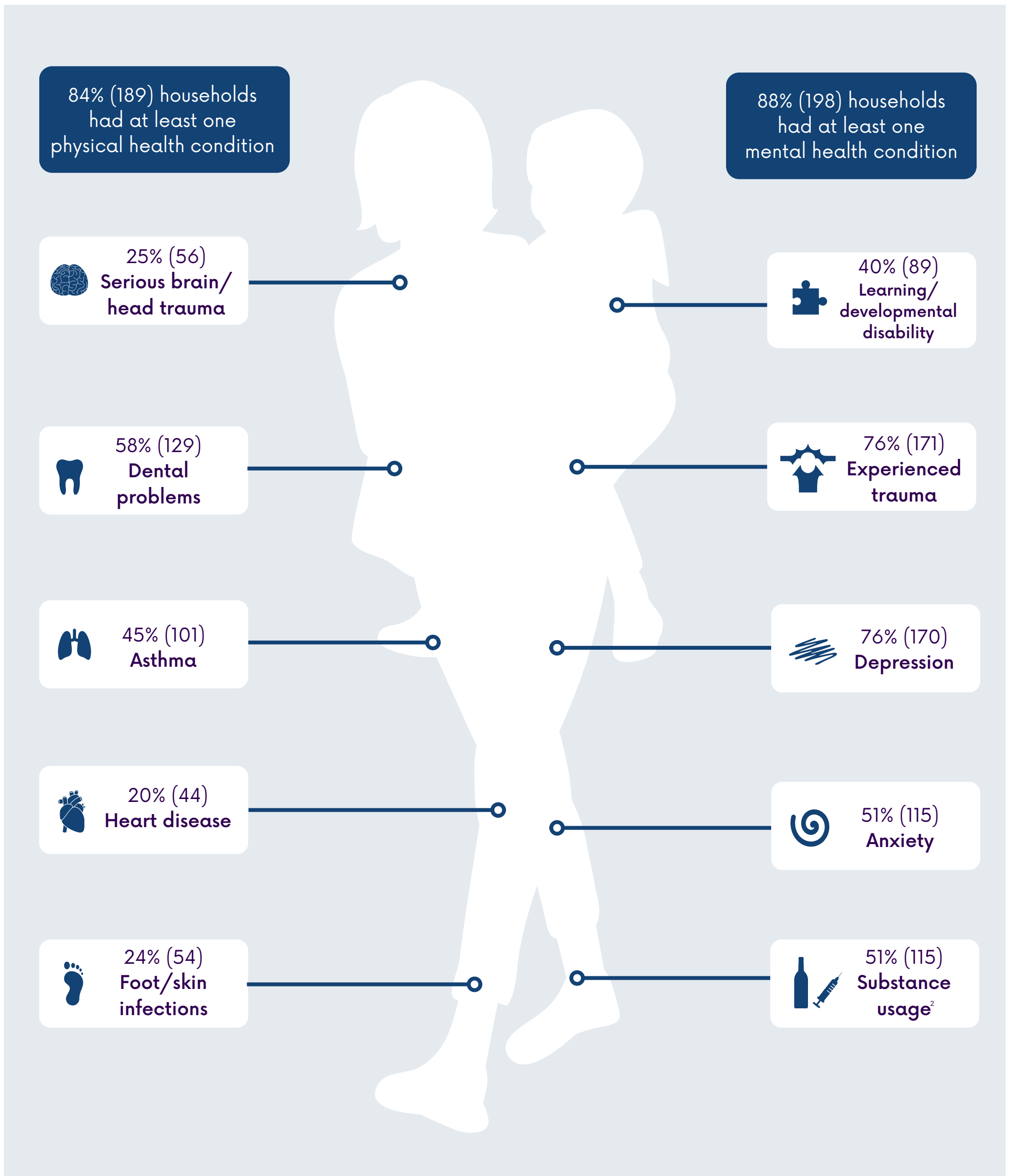
3. VI-SPDAT surveys provide an acuity score to indicate the level of vulnerability and support required to sustain housing as low (score 0-4), medium (score 5-9) and high (score 10+).

4. Figure for 'First experienced homelessness as a child' may be under represented due to non responses to the question by 122 people.

5. Figure for 'Substance use' is based on answering 'Yes' to at least one alcohol and or drug use question to indicate substance usage.

SPOTLIGHT ON HEALTH: HIGHLY VULNERABLE

People experiencing homelessness have been shown to be at increased risk of morbidity and mortality.¹ 224 households surveyed with a high vulnerability score had the following health conditions and support needs:



NOTES:

This data is representative of 290 households where main presenting person per household completed a Vulnerability Index - Service Prioritisation Decision Assistance Tool (VI-SPDAT) survey AND SCORED HIGHLY between December 2021 to January 2024.

VI-SPDAT surveys provide an acuity score to indicate the level of vulnerability and support required to sustain housing as low (score 0-4), medium (score 5-9) and high (score 10+).

1. <https://www.aihw.gov.au/reports/australias-health/health-of-people-experiencing-homelessness>

2. Figure for 'Substance use' is based on answering 'Yes' to at least one alcohol and or drug use question to indicate substance usage.